

SP-9 Surface Parking Lot Construction Management Services Disneyland Resort, Anaheim, California

Owner:
Disneyland Resort

Owner Contact:
John Drager
(714) 817-1319

Key Personnel:
Tony Gatoff

Management Cost:
\$183,000

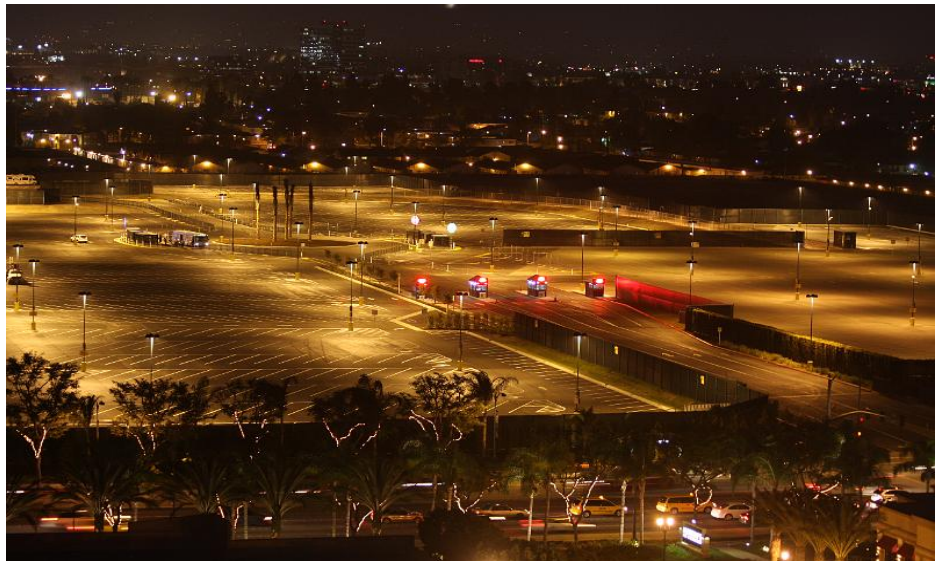
Construction Cost:
\$6.7M

Completion Date:
March 2010

Simplus provided construction management services for the construction of a \$6.7M surface parking lot for the Disneyland Resort.

Construction management services included managing and coordinating the efforts of the general contractor, subcontractors, Disneyland Resort staff, City of Anaheim, utility companies, local business owners and hotels near this 28-acre site.

Activities included the construction of an asphalt paved surface parking lot. The site originally was an old strawberry farm which required mass grading and preparation for asphalt. Approximately half of the lot was constructed with porous asphalt over a 13-inch section of porous rock. The other half was constructed with conventional asphalt over native. The work also included toll booth installation, pedestrian/bus shelters, bus traffic round-about for pedestrian pick-up and drop-off, themed signage, CMU retaining soundwall, landscaping, irrigation, bio-swales, 24-inch storm drain as well as voice and data connectivity of toll booths and kiosks to the Resort.



- Developed Area – 28 Acres
- Infiltration Trench/Bio Swales – 3 Acres
- Asphalt Paving Area – 21.5 Acres
 - ✓ 3" Porous Asphalt Over 13" Porous Base – 7.5 Acres
 - ✓ 3" Conventional Asphalt Over Native – 14 Acres
- Total Parking Stalls – 2,784
 - ✓ H/C Parking Stalls – 84
 - ✓ Regular Parking Stalls – 2,700
- Toll Booths – 4
- Bus/Pedestrian Covered Shelters – 6
- Kiosks - 4

Simplus