

Berths 142-147 Intermodal Container Transfer Facility Port of Los Angeles, California

Owner:
Port of Los Angeles

Owner Contact:
Stephen Schmucker
TranSystems
Corporation
(562) 307-7568

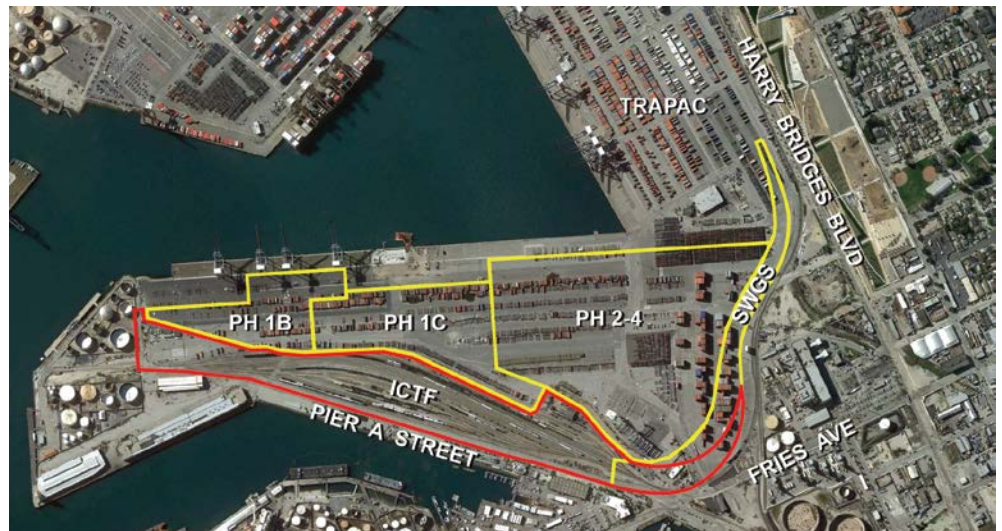
Key Personnel:
Adam Hunt

Construction Cost:
\$61.4 Million

Completion Date:
December 2016

As a VSBE, Simplus was selected by TranSystems to provide environmental compliance coordination services as part of the construction management team for the Port's new ICTF facility. This project is a component of the phased development of the Berths 136-147 Trans Pacific (TraPac) Container Terminal Improvement Program.

The work includes demolishing the existing Pier A Rail Yard, grading, placing surcharge, constructing new utilities, including water, sewer, storm drain, electrical and communications, installing track work, railway signal equipment, a train in motion system and switches, sliding derails, and bumper posts, installing crane rails foundations and crane rail, high mast light poles and fire hydrant assemblies, optical character recognition portals, a turnover anchor pit, and compressed air system, constructing a secondary gate with truck scales, gate arms, and concrete pedestals, installing a compressor building, guard booth, and customs/border protection office building, constructing concrete and asphalt concrete pavement, and installing signage, striping and fencing on K-rail.



Construction Management Division (CMD). A number of environmental requirements are construction-related. As a result, the Port's CMD plays a significant role in achieving the Port's objective of environmental stewardship. The Port identifies mitigation measures and mitigation monitoring requirements for development projects (fugitive dust, noise, traffic disruption and other requirements) which are to be addressed during construction. The Environmental Coordinators provide the required mitigation monitoring and reports to the CMD.

Simplus